



Relieves Pain
& Improves
Overall Health

TruePulse A2000® User Guide

*Restoring Wellness
One Pulse at a Time®*

www.PulsedHarmonix.com

1.855.749.7363

TruePulse A2000[®]

Device & Accessories



Accessories fabric may vary.

Thank you
for your purchase of the
True Pulse A2000[®]

It is our sincere hope and expectation that you will benefit from the powerful PEMF therapy that our product offers. Don't forget your pets! They love the A2000! Let's get started so you can discover the healing power of Pulsed Harmonix's True Pulse A2000:

We take your well-being seriously. Please read this User Guide carefully to ensure the correct use of the A2000, and adherence to the important safety precautions listed on Page 6.

You can be reading details in this User Guide while you are beginning the process of recharging and detoxifying your blood cells. The first few sessions will jump start the process of resetting and harmonizing your autonomic and parasympathetic systems. With this process underway, all areas of your body will be much more responsive to the **A2000**.

You can also find this user guide on our website at:

<http://pulsedharmonix.com>

We encourage all device owners to visit the Pulsed Harmonix website: <http://pulsedharmonix.com>, where you will find valuable PEMF information: FAQs, testimonials, science, history, and links to clinical studies at NIH's (National Institutes of Health) PubMed website: <http://www.ncbi.nlm.nih.gov/pubmed>
We welcome your comments, testimonials, and other communications.

May the Pulse be with You!





Founder & CEO
Jack Butler

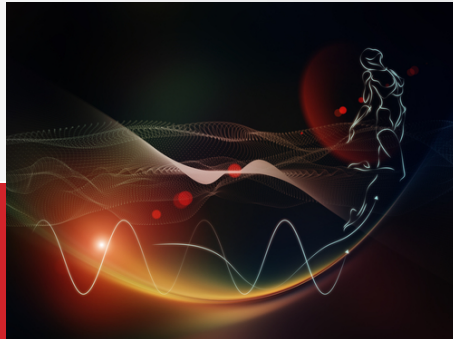
Having managed several successful business ventures, Jack now devotes his full attention to the development of safe, effective, and affordable PEMF healing technology.

“Life depends upon electromagnetic field energy. The A2000 offers a range of healing frequencies, optimizing the body's natural healing process. I hope you enjoy your A2000 and may the pulse be with you!”



TABLE OF CONTENTS

	<i>Page Number</i>
Important Notice - Safety Precautions	6
PEMF Technology	7
Device Set-Up	8
Operating Instructions	9
TruePulse A2000® Protocols - Timer Controls	10
TruePulse A2000® Protocols - Intensity Controls	11
Frequently Asked Questions	12
Troubleshooting	13
Cleaning and Care Liability	13
and Warranty Technical	14
Information Return	14
Merchandise Policies	15





Safety Precautions

The TruePulse A2000[®] creates a powerful electromagnetic field that extends approximately 3 feet, at maximum intensity, in all directions, from the **A2000** applicators. These powerful, therapeutic, magnetic pulses may erase some magnetic strips on credit cards, as well as damage or disrupt electronics. It is important to keep the following items a minimum of 3 feet from **A2000** applicators, when in use:

- » Credit cards
- » Cell phones
- » Identification cards, or tags with magnetic strips
- » Car keys with electronics
- » Computers & other electronic devices

The A2000's powerful magnetic pulses **prohibit** its use under the following conditions:

- » Pregnancy
- » Those with organ transplants
- » Those with non-MRI safe IUDs
- » Those using a pacemaker, hearing aids, or other electrical implanted/devices

NOTE: *Non-magnetic metal rods, screws and plates, and MRI safe implants are safe for PEMF use. If you have a concern regarding your pet's microchip, we encourage you to contact your veterinarian or microchip supplier, for advice, to address concerns.*

*Some users may be more sensitive to PEMF. It is advised to begin by providing therapy to the mid-section of your body first, with low intensity for **TWO** - 15 to 30 minute sessions, at least 5 hours apart, for the first 2 days. This will recharge your blood cells, reset the body's autonomic and parasympathetic systems, and begin the detoxification process. With this process in place, therapy of any area of the body will produce faster and better responses.*

Remove any items that may contain magnetic strips, or that may be electronically operated.

If the user is in frail condition, limit early exposure to 15 minutes per therapy session for the first few days. Therapy duration may be increased according to the user's preference.

Pulsed electromagnetic fields (PEMFs) support the natural elimination of toxins. While beneficial, it is very important that you drink a sufficient amount of water to assist this process.



PEMF Technology

Informative videos can be found on the Pulsed Harmonix website at:

www.pulsedharmonix.com/videos

The TruePulse A2000[®]'s magnetic field is produced by the current-carrying coil. The loop configuration creates powerful magnetic fields. These flow in a circular motion in the same direction inside and outside of the loop. Our mat, mitt and pouch accessories have all been configured to optimize the pulse fields. (Figure 1)

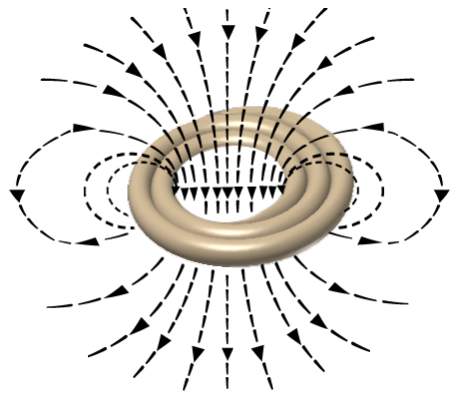


Figure 1

Figure 2

The Proof is in the Blood



Cells **BEFORE**
PEMF Therapy

Cells **AFTER**
PEMF Therapy

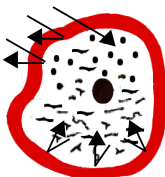
Stacked Stagnant Cells Free Flowing Cells

Unhealthy hemoglobin cells have low energy and vibration levels, which cause them to stick to each other. As the A2000's electromagnetic fields pulse through the body. Sticky cells are vibrated loose from each other. The separated, single cells can pass through small capillaries, thereby increasing the delivery of oxygen and nutrients throughout the body. (Figure 2)

Open ion channels also allow nutrients to be easily assimilated, and waste eliminated, optimizing cellular health and performance. (Figure 3)

Unhealthy Cell

Nutrient assimilation and elimination are greatly inhibited.



Healthy Cell

Nutrients can be easily assimilated, and toxins eliminated.

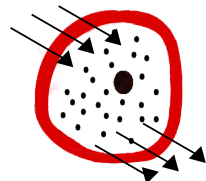


Figure 3

Device Connector Instructions



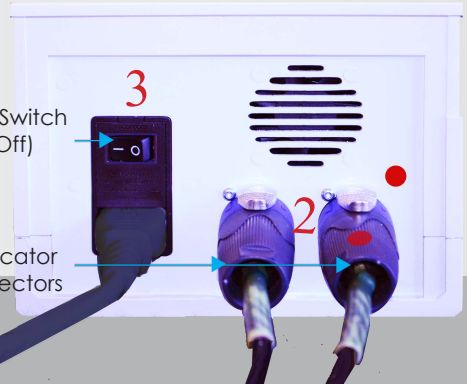
IMPORTANT: DO NOT ATTEMPT TO REMOVE AC POWER CORD FROM THE BACK OF THE A2000. Doing so may violate the warranty.

Reset Button
on the GFCI
Connection at the
end of the
Power Cord



Power Switch
(On/Off)

Applicator
Connectors



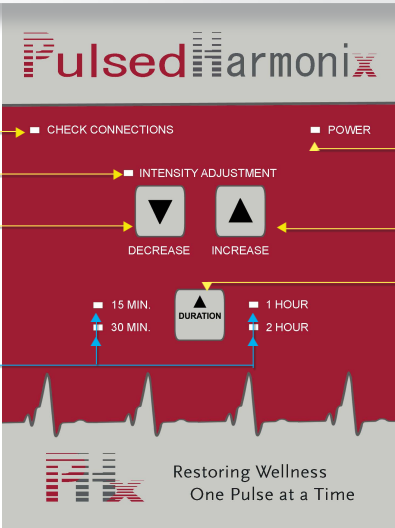
1. Each time the AC power cord is connected to an electrical outlet, it will be necessary to press the **Reset Button** on the GFCI (Ground Fault Circuit Interrupter) as shown above. There is an audible snap when the GFCI is engaged. Press **TEST** and **RESET**.
2. Connect your chosen Applicator Coil (mat, mitt or pouch) into the connector receptacles on the back of the **A2000**. **See Image (a)**
Line up the silver metal locking tab on the connector at the end of the Applicator Coil, with the screw located next to the receptacle. Gently push each connector into the A2000, and turn clockwise, until it snaps into place.
3. One of the Applicator Connectors is marked with a **red dot**. Always insert the red dot connector to the red dot marked receptacle.
4. Turn on the **A2000**, and proceed to set session duration and intensity. To remove the Connector from the back of the device, press and slide the silver metal locking tab back and away from the **A2000**, turn counterclockwise, and gently pull apart.



Note: If a custom coil configuration is desired, remove the coil from the Mitt, and separate the coils (red tape bundle and green tape bundle) to the **BUTTERFLY** shape . See the **PHx®** website video: "How to use the TruePulse A2000".

The TruePulse A2000®'s design allows users to explore a variety of therapy durations, and intensity settings, to accommodate various conditions, or health maintenance regimens.

Session Set-Up Procedure



The diagram shows the control panel of the Pulsed Harmonix device. It features a red background with white text and icons. At the top, the brand name 'Pulsed Harmonix' is displayed. Below it, there are several buttons and indicators: 'CHECK CONNECTIONS', 'POWER', 'INTENSITY ADJUSTMENT', 'DECREASE', 'INCREASE', and 'DURATION'. The 'DURATION' button has four options: 15 MIN., 30 MIN., 1 HOUR, and 2 HOUR. A pulse waveform is shown at the bottom of the panel. Callouts on the left and right sides explain the function of these buttons and indicators.

1 Red Check Connections Light → CHECK CONNECTIONS

Blue Pulse Activity Light → INTENSITY ADJUSTMENT

Decrease Intensity (Increases PPS) → DECREASE

Green Power Light → POWER

Increase Intensity (Decreases PPS) → INCREASE

2 Yellow Time Remaining Lights (See Page 10 for Timer Combinations) → DURATION (15 MIN., 30 MIN., 1 HOUR, 2 HOUR)

Increase Time of Therapy (add 15 minutes, up to 3 hours and 45 minutes.)

Restoring Wellness One Pulse at a Time

Important: The Duration (length of session) must be selected before choosing the desired intensity setting, otherwise pulsing will not begin.

1. Press the Duration button to set one of the 15 therapy Duration lengths. Each time the Duration button is pushed, 15 minutes is added to the session time, up to a maximum of 3 hours and 45 minutes. The next press of the Duration button zeros the remaining session time and stops pulsing.
2. Press the Increase/Decrease Intensity Adjustment buttons to adjust the intensity of pulses per second (PPS)

Stop and restart the session, or start a new session, at any time, by toggling the On/Off button on the back of the A2000.



1st Setting - Session Duration Options

The TruePulse A2000® allows you to tailor your therapy session duration and intensity to suit your needs. Discover what works for you! The A2000 can produce a wide range of frequencies and intensities.

For the first few sessions, the recommended therapy duration is 15 to 30 minutes, on the mid-section of the body, twice a day, starting with a low intensity setting. This will begin the process of recharging your blood cells and detoxifying them at the same time. Longer therapy times and high intensity in the first day or two may result in detoxification symptoms, due to the body's inability to process a sudden increase in toxic waste. Elimination of toxic waste, at the cellular level, is essential for a number of reasons. After these initial sessions, your cells have been energized, supplying more oxygen and nutrients throughout the body.

After you set the session timer, the device will begin pulsing at 14.3 pulses per second (PPS). This frequency setting produces approximately 142 Gauss. It is one of four Schumann frequencies the A2000 produces, and is a good setting to start with; therefore it is our default setting.

To increase or decrease intensity from the default intensity setting, or any PPS setting, simply press the **Increase or Decrease** (Intensity) button.

The chart shown here (**Figure 4**) provides the PPS for each intensity setting. The average maximum intensity (lowest PPS) of the three applicators is approximately 1,400 gauss. The peak intensity can be reached with the pouch applicator, 1977 gauss.

Each pulse contains a full spectrum of frequencies, which stimulate all of the essential functions of your body, including, as noted above, its ability to release toxins and reduce inflammation.

A2000 FW 1.04 Intensity	FW 1.04 Pulses per second	Average Highest Field of Pouch & Mitt & Mat
Level	pps	gauss
15	0.54	1400
14	0.71	1320
13	0.92	1210
12	1.20	1100
11	1.57	960
10	2.06	820
9	2.69	690
8	3.51	570
7	4.59	450
6	5.99	360
5	7.83	280
4	10.00	220
3	14.30	150
2	20.80	100
1	27.30	80
0 (OFF)	0	0

Figure 4





2nd Setting - Intensity Controls

The TruePulse A2000® has 15 intensity pulse settings, which are controlled by the **Increase/Decrease** Buttons. (Figure 5). By default, each time the A2000 is turned on, and session time is selected, it will begin operating at the A2000's 3rd intensity setting of 14.3 pulses per second (PPS).

To decrease the intensity, press the **Decrease Arrow Button**. The device will automatically stop pulsing when you decrease to intensity level 0 (lowest intensity). To increase intensity, press the **Increase Arrow Button**. 12 levels above the default (14.3 PPS) are available, with the highest intensity providing a pulse approximately every 2 seconds (0.54 PPS). The fewer the PPS, the higher the intensity will be. The blue **Pulse Activity Light** flashes in synchrony with the pulse.

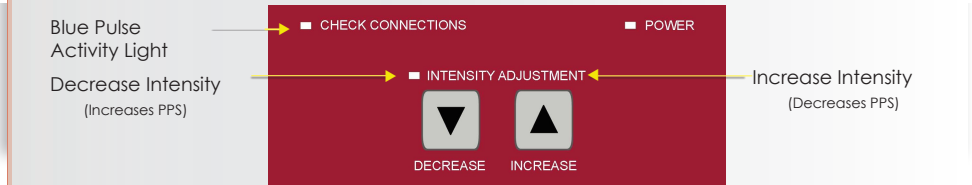


Figure 5

What the A2000 pulse delivers...

The A2000 applicator makes a clicking sound with each pulse. Each pulse sends a brief, very intense, current into the Applicator coil resulting in the rapid formation of an electromagnetic wave. The PEMF energy produced by the A2000 ranges from 35 gauss minimum to 1,977 gauss maximum depending on which applicator (mat, mitt or pouch) is being used. Much lower gauss levels can be achieved by simply distancing the applicator approximately 5 to 15 inches from the body.

(Figure 6)

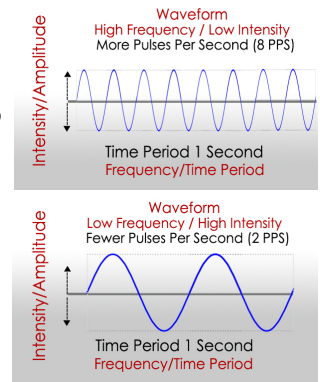


Figure 6

Each pulse contains a spectrum of frequencies. This spectral band, plus the pulse frequency and intensity, create the coupling and penetrating mechanism of Pulsed Harmonix®'s technology into cells and tissue. Research shows that PEMF therapy stimulates a critical process called myosin phosphorylation, which produces ATP (Adenosine Triphosphate), an energy-bearing molecule found in all living cells. ATP fuels the body's immune system, cell reproduction, circulation, respiration, organ function, locomotion, and oxygen/nutrient assimilation. **It is recommended that a range of intensities be explored during individual sessions. This may enhance the PEMF's efficacy for various conditions.**





Frequently Asked Questions

What research supports claims that PEMF (Pulsed Electromagnetic Field) therapy devices have a positive impact on individual's, health and well-being? Thousands of studies on PEMF have been conducted by NASA, NIH (National Institutes of Health), and other institutions around the world. A comprehensive collection of these studies can be found at PubMed, a website of the NIH:

www.ncbi.nlm.nih.gov/pubmed. Additionally, you can find studies on virtually any condition by searching PEMF followed by the name of the condition.

Is PEMF safe for human and animal use?

Yes. The vast majority of studies support the safety and efficacy of PEMF therapy.

How soon will results from therapy sessions be noticeable?

Most individuals report positive results within their first 15 minute session. Initially, a reduction of pain (if that was the underlying symptom) is most commonly noticed. For persistent conditions, frequent and regular use is recommended for longer lasting results.

How long will the results last?

For some, the initial results from the first session only lasts a day or two. For others, results can last weeks, or indefinitely. It is impossible to accurately predict how long results will last. However, significant pain relief gained in the first session indicates that subsequent sessions are likely to be very successful.

Who should use a PEMF device?

People who are:

- » Experiencing or showing indications of painful conditions, including swelling and bruising
- » Recovering from an injury
- » In need of improved wellness
- » In need of improved circulation
- » Desiring improvement and maintenance of overall health

Who should NOT use a PEMF device?

Those with the following conditions:

- » Pregnancy
- » Organ transplant recipients
- » Those with non-MRI safe IUDs
- » Those with pacemakers, hearing aids, or other electronic implants/devices



TroubleShooting



PROBLEM	POSSIBLE CAUSE	FAULT REMOVAL
<ul style="list-style-type: none">■ Power On/Off Button is in "On" position, but the green power indicator light does not light up.	<ul style="list-style-type: none">■ Power cord is not firmly connected, or there is no power in the wall outlet.■ Reset button has not been pressed, or power supply cord is damaged.	<ul style="list-style-type: none">■ Check that plug connection is secure, and there is power in the wall outlet.■ Press Reset button on power cord GFCI.
<ul style="list-style-type: none">■ Applicator is not emitting a pulse.	<ul style="list-style-type: none">■ Applicator connectors are not properly connected.■ Duration and intensity settings have not been activated.■ Session may be finished.	<ul style="list-style-type: none">■ Reset the GFCI. Turn the A2000 off and back on.■ The applicator connectors are not locked in receptacles.■ Press Duration button to begin session, then select desired intensity setting.
<ul style="list-style-type: none">■ The Check Connections light is red.	<ul style="list-style-type: none">■ One, or both ends, of the Applicator Connectors are not correctly attached to the A2000.	<ul style="list-style-type: none">■ Turn off the A2000, and reconnect the Connectors to the back of the A2000.

Care & Cleaning

- » Wipe the coil with a soft, clean, cloth, moistened with 70% isopropyl alcohol or hydrogen peroxide, to clean and disinfect.
- » Use only a soft, dry cloth to clean the body of the **A2000**. Do not use any abrasive cleanser, and never submerge the TruePulse A2000® device, MCAC coil, Pouch, or Mat, into water, or any other liquid. The cloth covers of the Applicators may be gently washed and dried. Use only gentle/low cycles.
- » Do not expose the TruePulse A2000® to extreme temperatures, humidity, or direct sunlight. **Never use the device in, near, or around any liquid.**





Liability & Warranty

Pulsed Harmonix[®], LLC, (PHx[®]) TruePulse A2000[®], and its Applicators are guaranteed to operate for a period of 24-months from the date of purchase, when used in accordance with the instructions provided herein. Damage due to misuse or abuse, are not covered by this warranty. Warranty is null and void if the device has been opened, or the device has been tampered with in any way.

PHx[®] shall not be liable in any manner for bodily injury and/or property damage arising from the misuse of the TruePulse A2000[®], including all PHx[®] accessories.

Important: Please enter equipment and purchase details below:

Serial Number (Located on bottom of device): VERPHM_____

Date of Purchase: _____

Technical Information

Operating environment:	-17°C to 40°C (0°F to 104°F)
Storage Environment:	-20°C to 50°C (-4°F to 122°F)
Dimensions:	W - 6.2" D - 7.83" H - 4.72"
	W -157.5 D - 199 H -120 mm
Weight:	4.6 lbs. (2.086 kg)



Return Merchandise Policies



Defective Merchandise:

- May be returned for exchange, or prorated refund, within 24-months of the delivery date, after obtaining an RMA number.
- If you received incorrect or damaged merchandise, we will provide you with a pre-paid label, for return shipping.
- All paperwork, including warranties and instructions, must be returned along with the original packaging and placed in the original manufacturer's shipping box.
- Call us at 1.855.749.7363 and request a Return Merchandise Authorization (RMA) number. We will need the following information:
 - » Purchaser or business name, account number, and invoice number.
 - » Product serial number.
 - » Reason for return. If defective, describe specifically what is wrong.

Non-Defective Merchandise:

- May be returned, if not satisfied, within 30 days of the delivery date.
- Returns are subject to a \$200 restocking fee.
- Must be returned in new condition in the original packaging. Items damaged, or showing signs of wear, are not returnable. Missing items will be subject to additional charges.
- All paperwork, including User Guide, must be included, along with the original packaging. Carefully place the A2000 in the original protective styrofoam casing and return accessories to their plastic bags and individual spaces within the original manufacturer's shipping box. **DO NOT** put any stickers, labels, marks or tape on the original manufacturer's packaging.
- Please call Pulsed Harmonix at 1.855.749.7363 or email: info@pulsedharmonix.com for a return shipping label.





TruePulse A2000®

Registered FDA Class 1 Medical Device



If you or your pet suffer from: » Inflammation

- » Back pain
- » Joint pain
- » General injuries

Or, if you just want to improve and maintain health, performance, and wellness, then...



Discover the Healing Power of

Pulsed Harmonix®

Restoring Wellness One Pulse at a Time®

