

Relieves pain
and improves
overall health



TRUE PULSE A2500 USER GUIDE®

PulsedHarmonix.com

Pulsed
Harmonix®
Restoring Wellness One Pulse at a Time

“Thank You FOR YOUR PURCHASE”

It is our sincere hope and expectation that you will benefit from the powerful PEMF therapy that our product offers. Don't forget your pets! They love the A2500!

Let's get started so you can discover the healing power of Pulsed Harmonix's True Pulse A2500®:

We take your well-being seriously. Please read this User Guide carefully to ensure the correct use of the A2500, and adherence to the important safety precautions listed on Page 6.

You can read details in this User Guide while you are beginning the process of recharging and detoxifying your blood cells. The first few sessions will jump-start the process of resetting and harmonizing your autonomic and parasympathetic systems. With this process underway, all areas of your body will be much more responsive to the A2500.

**You can also find this user guide on our website at:
PulsedHarmonix.com**

We encourage all device owners to visit the Pulsed Harmonix website (<http://pulsedharmonix.com>), where you will find valuable PEMF information: FAQs, testimonials, science, history, and links to clinical studies at National Institutes of Health's (NIH) PubMed website (<http://www.ncbi.nlm.nih.gov/pubmed>).

We welcome your comments, testimonials, and other communications!

TruePulse A2500®

Device and Accessories



Device



Junction Barrel
PRO Unit



Pouch



Mat



Butterfly Coil Mitt



Jack Butler

Founder and CEO

Having managed several successful business ventures, Jack now devotes his full attention to the development of safe, effective, and affordable PEMF healing technology.

The pulsing electromagnetic field (PEMF) therapy was developed by NASA, our partner, to keep astronauts alive while outside of the Earth's magnetic field. PEMF is considered vital for our health and longevity, especially with the Earth's magnetic field strength at only 5-10% of its long-term average.

Electromagnetic waves restore cellular energy and help your body heal itself! The **True Pulse A2500®** has been certified by The Space Foundation, and we use the same technology, based on NASA's research, to create PEMF in the A2500's electronics.



Device proudly manufactured in the United States



30-Day Guarantee.
If you are not completely satisfied, simply return it.



Partner of the Space Foundation, Space Certified Program



Table of Contents

| | |
|---|-------|
| Important Notice - Safety Precautions | 6 |
| PEMF Technology | 7 |
| Device Setup | 8 |
| Operating Instructions | 9-11 |
| Device Protocols | 12-13 |
| Frequently Asked Questions..... | 14 |
| Troubleshooting | 15 |
| Cleaning and Care | 15 |
| Liability and Warranty | 16 |
| Technical Information..... | 16 |
| Return Merchandise Policies | 17 |

Safety Precautions

The TruePulse A2500® creates a powerful electromagnetic field, extending up to 5 feet at maximum intensity in all directions from the applicator. These powerful, therapeutic, magnetic pulses may erase some magnetic strips on credit cards and **even** damage or disrupt electronics. It is important to keep the following items a minimum of 2 feet from A2500 applicators when in use:

 **Keep products 2 feet away from A2500 while using applicator**



Credit Cards



Cell Phones




Car Keys with
Electronics



Computers and other
electronic devices



ID Cards, tags with
magnetic strips

 **The A2500's powerful magnetic pulses prohibit use under the following conditions:**



Pregnant



Organ transplant
recipients



Those with
unsafe MRI IUDs



Those with
Pacemakers



Hearing Aids or Electrical
Implanted devices wearers

NOTE: Non-magnetic metal rods, screws and plates, and MRI safe implants are safe for PEMF use. If you have a concern regarding your pet's microchip, we encourage you to contact your veterinarian or microchip supplier for advice to address concerns.

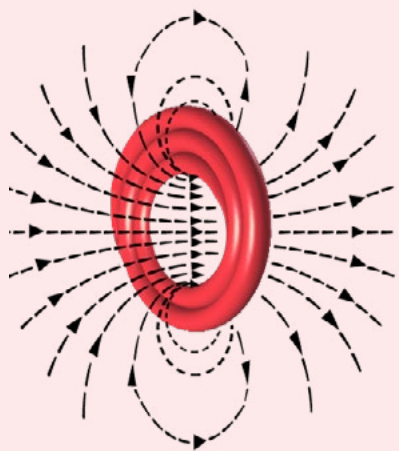
Some users may be more sensitive to PEMF (electro-sensitive). In any case, it is advised to begin by providing therapy to the midsection of your body with low intensity for 15 to 30-minute sessions, at least 5 hours apart, for the first 2 days. This will begin the process of resetting the body's autonomic and parasympathetic vital systems and begin the detoxification process. This will also recharge your blood cells and produce better and faster responses as you increase intensity.



Remove any items that may contain magnetic strips or that may be electronically operated.

If the user is in frail condition, limit early exposure to 15 minutes per therapy session for the first few days. Therapy duration may be increased according to the user's preference.

PEMFs support the natural elimination of toxins. While beneficial, it is very important that you drink a sufficient amount of water to assist the process.



The TruePulse A2500®'s magnetic field is produced by the current-carrying coil. The loop configuration creates powerful magnetic fields. These flow in a circular motion in the same direction inside and outside of the loop. Our Mat, Mitt, and Pouch accessories have all been configured to optimize the pulse fields.

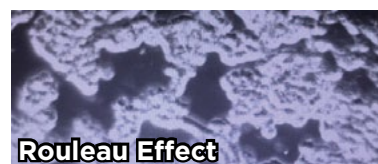
(Figure 1)

The proof is in the blood



Unhealthy blood cells have low energy and vibration levels, causing them to stick to each other. As the A2500's electromagnetic fields pulse through the body, sticky cells are vibrated loose from each other. The separated, single cells can pass through small capillaries, increasing the delivery of oxygen and nutrients throughout the body.

Before & After (Figure 2)

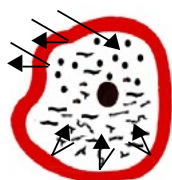


CELLS BEFORE PEMF THERAPY
Notice stacked stagnant cells



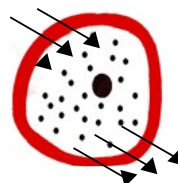
CELLS AFTER PEMF THERAPY
Notice free flowing cells

Opening ion channels also allow nutrients to be easily assimilated and waste eliminated, optimizing cellular health and performance.



Unhealthy Cell

Nutrients assimilation and elimination are greatly inhibited.



Healthy Cell

Nutrients are easily assimilated and toxins eliminated.

(Figure 3)



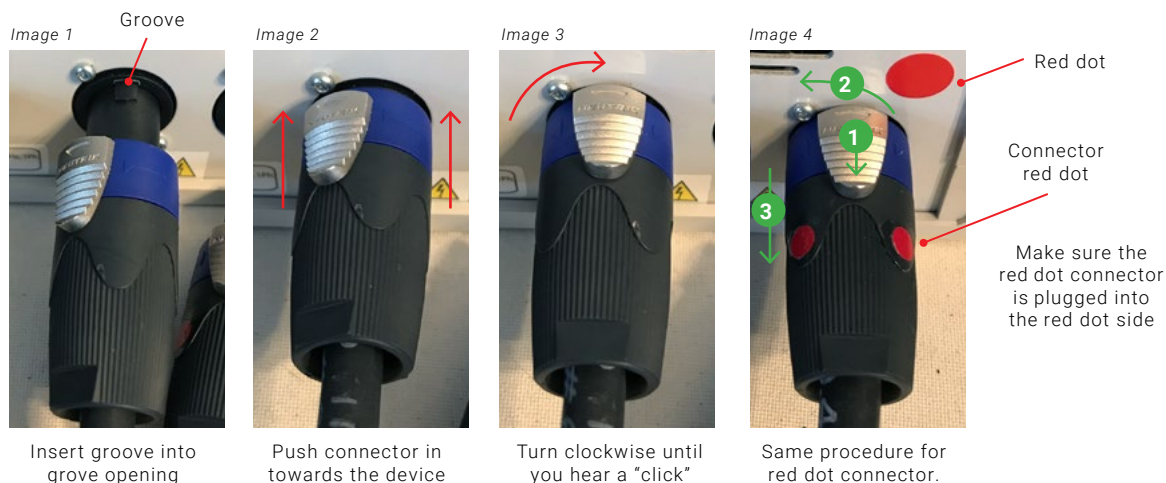
For informative videos, visit our YouTube channel at Pulsed Harmonix

Device Setup

Our power cord is a system that automatically adjust to any changes in global power supply and converts the current to 12v DC input. Power cord substantially reduces EMI and other frequencies to levels that are far below U.S. government approved maximum levels.

Connecting the device

1. **Connect device to wall.**
- 2A. **Choose an applicator coil.** Select Mat, Mitt, or Pouch, then plug the connector receptacles on the back of the A2500 (put the dual connection deal here).
- 2B. **Connect the connector receptacles.** Each coil has 2 connectors, make sure the connector with the red dot is plugged into the socket with the red dot (shown in *Image 4*).



3. **Turn on and set session intensity.** Turn on power switch on the back of the device and set the desired time and intensity levels on the front of the A2500. See next page for instructions.
To **REMOVE** connector, press down and slide the silver metal locking tab back and away from the A2500 (see green arrows on *Image 4*).

Note: If a custom coil configuration is desired, remove the coil from the Mitt cover, and separate the coils (red tape bundle and green tape bundle) to the BUTTERFLY shape. See the PHx® website video: "How to use the TruePulse A2500".

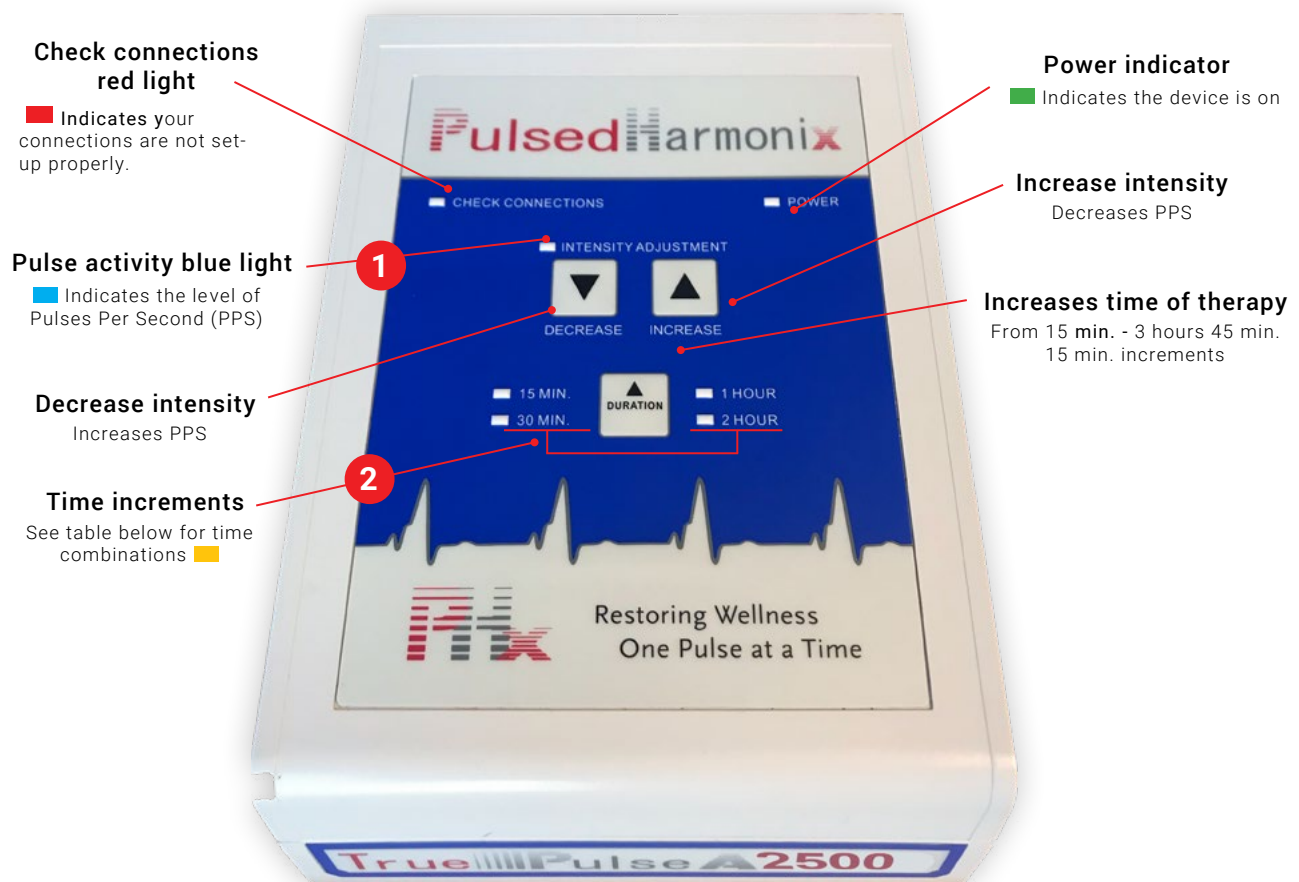
Operating Instructions

The True Pulse A2500®'s design allows users to explore a variety of therapy durations and intensity settings to accommodate various conditions, or health maintenance regimens.



IMPORTANT: The duration of the session must be selected before choosing the desired intensity setting, otherwise pulsing will not begin.

Session Set-up Procedure



- 1. Press the Duration button to set the treatment session duration.** Each time the Duration button is pushed, 15 minutes is added to the session time up to a maximum of 3 hours and 45 minutes. The next press of the Duration button, after the maximum time, ends the session time and stops pulsing.
- 2. Press the Increase/Decrease Intensity Adjustment buttons to adjust the intensity of pulses per second (PPS).**

**While the session is in progress, the intensity can be increased or decreased without interruption of the session.*

Operating Instructions



The Mat

The **Mat** is designed to provide a large area with PEMF treatment, typically torso. Its primary **function works to** energize all the vital systems and detox the body at the same time.

The Butterfly Mitt

The **Butterfly Mitt** is a focused applicator. The wings of the butterfly should be used to surround a diseased or injured area of the body, focusing the magnetic power.

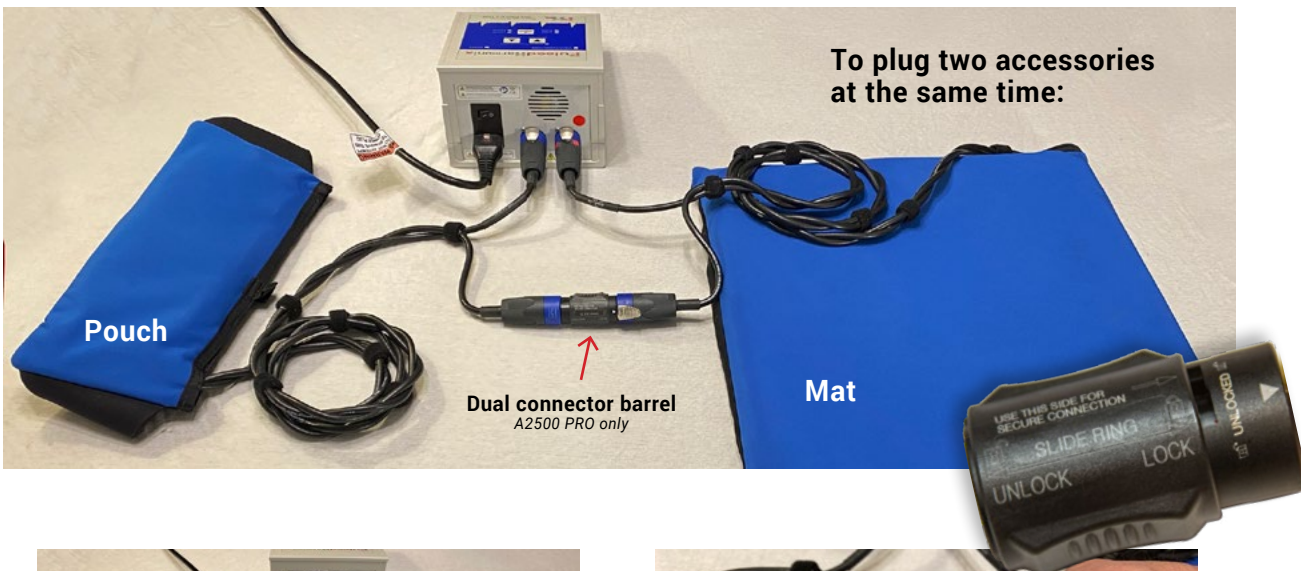


The Pouch

The **Pouch** with its straps can be focused and held on a specific area with primary use, **such as** across the lumbar area **for the** kidneys.

Dual Applicator Quick Start Guide Feature only available on the A2500 PRO device

Pulsed Harmonix now offers the ability to operate two accessory applicators from a single True Pulse A2500 PRO PEMF wellness device!



1. Insert and twist the red dot connector of one applicator into the red dot socket on the Pulser. Insert and twist the non-red dot connector of the other applicator into non-red dot socket on the Pulser.



2. Insert either remaining connector into the Barrel and twist to secure. Insert the last connector into the Barrel and twist to secure.



3. Check that all four connectors are locked in by their slide tab.



4. The circuit is now complete.

Device Protocols

1st Setting - Session Duration Options

The True Pulse A2500® allows you to tailor your therapy session duration and intensity to suit your needs. Discover what works for you! The A2500 can produce a wide range of frequencies and intensities.

For the first few sessions, the recommended therapy duration is 15 to 30 minutes, using the Mat on the midsection of the body, twice a day, starting with a low intensity setting. This will begin the process of recharging your blood cells and detoxifying them at the same time. Longer therapy times and high intensity on the first day or two may result in detoxification symptoms due to the body's inability to process a sudden increase of toxic waste. Elimination of toxic waste, at the cellular level, is essential for a number of reasons. After these initial sessions, your cells have been energized, supplying more oxygen and nutrients throughout the body.

After you set the session timer, the device will begin pulsing at 14.3 pulses per second (PPS). This frequency setting produces approximately 142 Gauss. It is one of four Schumann frequencies the A2500 produces, and is a good setting to start with; therefore it is our default setting.

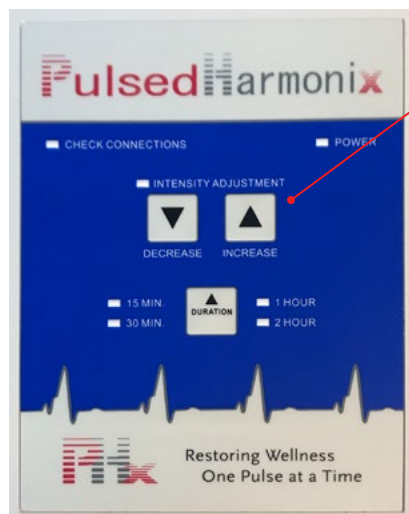


Figure 4

The chart shown here (Figure 5) provides the PPS for each intensity setting. The average maximum intensity setting (lowest PPS) of the three applicators is approximately 1,510 gauss.

The pulse wave form emitted from the applicators contains a full spectrum of frequencies, stimulating all of the essential functions of your body, including, as noted above, its ability to release toxins and reduce inflammation.

INTENSITY TABLE

| A2500 Intensity | FW 1.04 Pulsed per second | Average highest field of Pouch and Mitt & Mat |
|-----------------|---------------------------|---|
| Intensity Level | pps (Hz) | ~peak gauss |
| 15 | 0.54 | 1510 |
| 14 | 0.71 | 1460 |
| 13 | 0.92 | 1250 |
| 12 | 1.20 | 1200 |
| 11 | 1.57 | 1010 |
| 10 | 2.06 | 850 |
| 9 | 2.69 | 710 |
| 8 | 3.51 | 580 |
| 7 | 4.59 | 480 |
| 6 | 5.99 | 360 |
| 5 | 7.93 | 290 |
| 4 | 10.00 | 240 |
| 3 | 14.30 | 140 |
| 2 | 20.80 | 95 |
| 1 | 27.30 | 80 |
| 0 | -- | 0 |

Figure 5

2nd Setting - Intensity Controls

The True Pulse A2500® has 15 intensity pulse settings, which are controlled by the Increase/Decrease Buttons. (Figure 4). By default, each time the A2500 is turned on and session time is selected, it will begin operating at the A2500's 3rd intensity setting of 14.3 pulses per second (PPS).

To decrease the intensity, press the **Decrease Arrow Button**. The device will automatically stop pulsing when you decrease to Intensity Level 1 (lowest intensity). To increase intensity, press the **Increase Arrow Button**.

There are 12 levels above the default (14.3 PPS) available with the highest intensity providing a pulse approximately every 2 seconds (0.54 PPS). The fewer the PPS, the higher the intensity will be. The blue **Pulse Activity Light** flashes in synchrony with the pulse.

What does the A2500 Pulse deliver?

The A2500 applicator makes a clicking sound with each pulse. Each pulse sends a brief, very intense current into the Applicator coil resulting in the rapid formation of an electromagnetic wave. The PEMF energy produced by the A2500 ranges from 35 gauss minimum to 1,977 gauss maximum depending on which applicator (mat, mitt or pouch) is being used. Much lower gauss levels can be achieved by simply distancing the applicator approximately 5 to 15 in from the body (*Figure 6*).

Each pulse emitted from the applicators contains a spectrum of frequencies. This spectral band, plus the pulse frequency and intensity, create the coupling and penetrating mechanism of Pulsed Harmonix's technology into cells and tissue. Research shows that PEMF therapy stimulates a critical process called myosin phosphorylation, which produces ATP (Adenosine Triphosphate), an energy-bearing molecule found in all living cells. ATP fuels the body's immune system, cell reproduction, circulation, respiration, organ function, locomotion, and oxygen/nutrient assimilation. **It is recommended that a range of intensities be explored during individual sessions.**



Frequently Asked Questions

What research supports claims that PEMF therapy devices have a positive impact on individual's health and well-being?

Thousands of studies on PEMF have been conducted by NASA, NIH, and other institutions around the world. A comprehensive collection of these studies can be found at PubMed, a website of the NIH (www.ncbi.nlm.nih.gov/pubmed), and Dr. Pawluk's website (www.drpawluk.com). Additionally, you can find studies on virtually any condition by searching PEMF followed by the name of the condition.

Is PEMF safe for human and animal use?

Yes. The vast majority of studies support the safety and efficacy of PEMF therapy for humans, horses, and dogs.

How soon will results from therapy sessions be noticeable?

Most individuals report positive results within their first 15 minute session. Initially, a reduction of pain (if that was the underlying symptom) is most commonly noticed. For persistent conditions, frequent and regular use is recommended for longer lasting results.

How long will the results last?

For some, the initial results from the first session only lasts a day or two. For others, results can last weeks, or indefinitely. It is impossible to accurately predict how long results will last. However, significant pain relief gained in the first session indicates that subsequent sessions are likely to be very successful.

Who should use a PEMF device?

People who are experiencing:

- » Swelling and bruising
- » Poor circulation
- » Injury

Or for individuals desiring improvement and maintenance of overall health and wellness

Who should NOT use a PEMF device?

Those with the following conditions:

- » Those who are pregnant
- » Organ transplant recipients
- » Those with non-MRI safe IUDs
- » Those with pacemakers
- » Those using hearing aids or other electronic implants/devices



Those who are pregnant



Organ transplant recipients



Those with non MRI-safe IUDs



Those with pacemakers

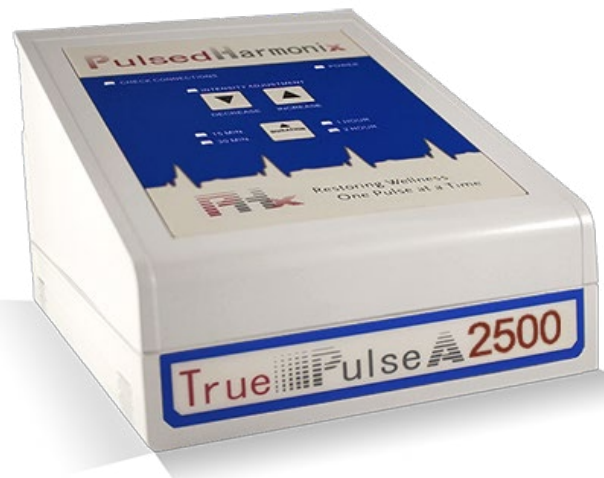


Those using hearing aids or electrical implanted devices

| Problem | Possible Cause | Fault Removal |
|--|--|--|
| Button is in On position, but the Power Indicator light does not light up | <ul style="list-style-type: none"> Power cord is not firmly connected, or there is no power in the wall outlet. Power supply cord is damaged. | <ul style="list-style-type: none"> Check that plug connection is secure and if there is power in the wall outlet. |
| Applicator is not emitting a pulse | <ul style="list-style-type: none"> Applicator connectors are not properly connected. Duration and intensity setting have not been activated. Session may be finished. | <ul style="list-style-type: none"> Turn the A2500 off and back on. The applicator connectors are not locked in receptacles. Press Duration button to begin session, then select desired intensity setting. |
| The “Check Connections” light is red. | <ul style="list-style-type: none"> One or both ends of the Applicator Connectors are not correctly attached to the A2500 device. | <ul style="list-style-type: none"> Turn off the A2500 device, and reconnect the Connectors to the back of the A2500 device. |

Care and Cleaning

- Wipe the coil with a soft, clean cloth, moistened with 70% isopropyl alcohol or hydrogen peroxide, to clean and disinfect.
- Use only a soft, dry cloth to clean the body of the A2500. Do not use any abrasive cleanser. **Never** submerge the True Pulse A2500® device, MCAC coil, Pouch, or Mat into water or any other liquid. The cloth covers of the Applicators may be gently washed and dried. Use only gentle/low cycles.
- Do not expose the True Pulse A2500® to extreme temperatures, humidity, or direct sunlight. **Never** use the device in, near, or around any liquid.



Liability and Warranty

Pulsed Harmonix®, LLC, (PHx®) TruePulse A2500®, and its Applicators are guaranteed to operate without maintenance when used in accordance with the instructions provided herein. Damage due to misuse or abuse are not covered by this warranty. Warranty is null and void if the device has been opened or the device has been tampered with in any way.

PHx® will not be liable in any manner for bodily injury and/or property damage arising from the misuse of the TruePulse A2500® and all PHx® accessories.

IMPORTANT: Please enter equipment and purchase details below:

SERIAL NUMBER

(Located on bottom of device): VERPHM _____

Date of Purchase: _____

Technical Information

True Pulse A2500®

Operating environments

0°F to 104°F
-17°C to 40°C

Storage environment

-4°F to 122°F
-20°C to 50°C

Dimensions

Width: 6.2 in Depth: 7.83 in Height: 4.72 in
Width: 157.5 mm Depth: 199 mm Height: 120mm

Weight

2 lb 13 oz
1.275 kg

Defective Merchandise:

- The A2500 systems come with a 36-month warranty
- **Call us at 1.855.749.7363 and request a Return Merchandise Authorization (RMA) number. We will need the following information:**
 - » Purchaser or business name and invoice number.
 - » Product serial number.
 - » Reason for return. If defective, describe specifically what is wrong.



Non-Defective Merchandise:

- May be returned, if not satisfied, within 30 days of the delivery date.
- Returns are subject to a \$200 restocking fee.
- Must be returned in new condition in the original packaging. Items damaged or showing signs of wear are not returnable. Missing items will be subject to additional charges.
- All paperwork, including User Guide, must be included along with the original packaging. Carefully place the A2500 in the original protective casing and return accessories to their plastic bags and individual spaces within the original manufacturer's shipping box.
- **Please call Pulsed Harmonix at 1.855.749.7363 or email: info@pulsedharmonix.com for a return shipping label.**

If you or your pet suffer from

- Inflammation
- Back Pain
- Joint Pain
- General Injuries



Or if you just want to improve and maintain health, performance, and wellness, then **DISCOVER THE HEALING POWER OF PULSED HARMONIX**

PulsedHarmonix.com

info@PulsedHarmonix.com | 855.749.7363

Fax 303.720.7222



Pulsed[®]
HarmoniX

Restoring Wellness One Pulse at a Time